

## Importing Pattern into Venom – Jan Bote’s Method – Using Cubase as Example

1. Use your DAW (mine is Cubase) to create a short MIDI sequence 16 bars long (See Figure 1 for example).

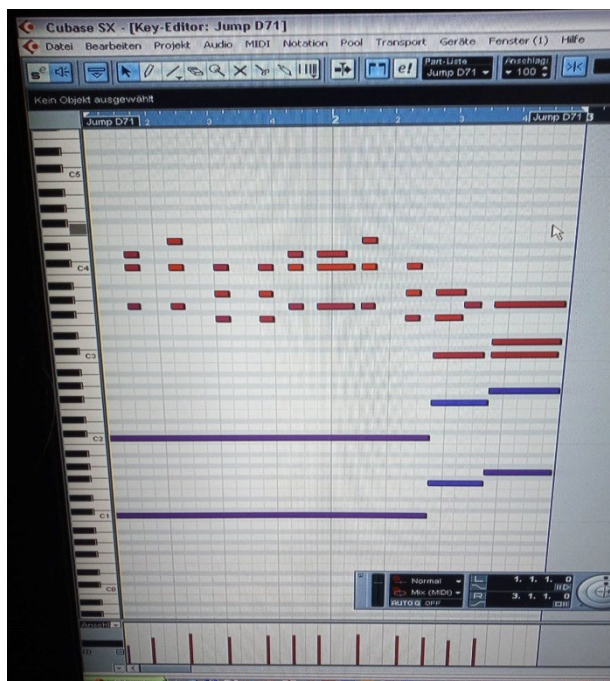


Figure 1. Example MIDI Sequence.

2. Set the MIDI channel to 1 in your DAW before exporting, Otherwise you may have an empty pattern after export as I have found.
3. Select export to MIDI file (Figure 2). Select your destination (Figure 3) (recommend using your Vyzex pattern folder, but not required).

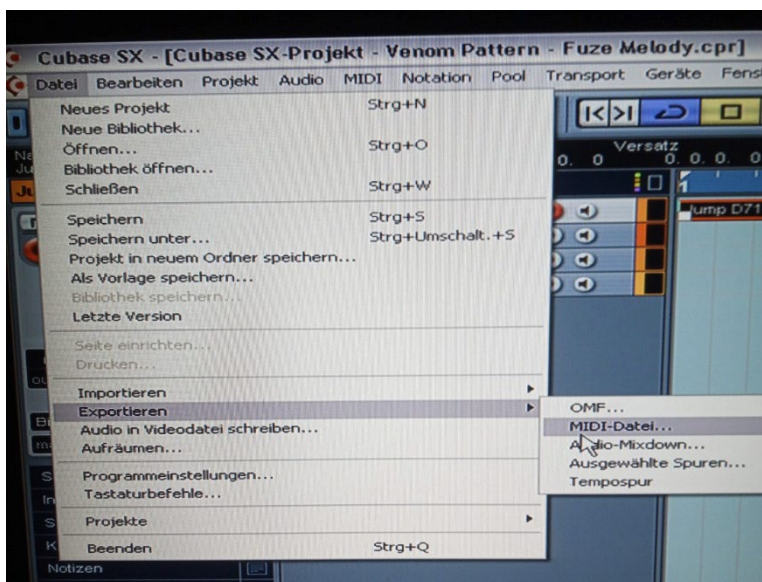


Figure 2. Select Export (Cubase).

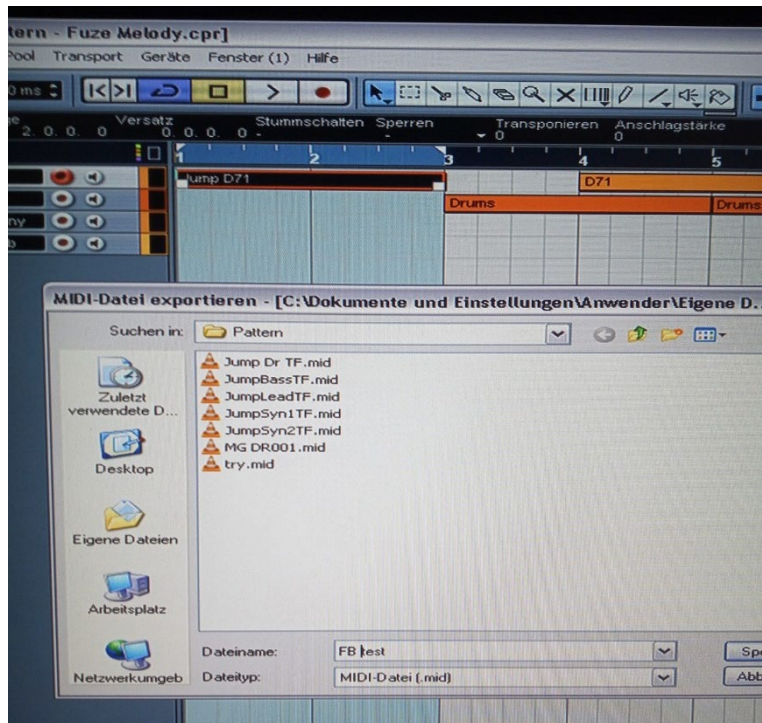


Figure 3. Select Destination/File Name.

4. Set the export-resolution to 96ppq (Figure 4) as recommended in Venom User Guide (page 31). Select OK to save/export (specific steps may vary with the software you are using). The MIDI file should show up in your selected folder.

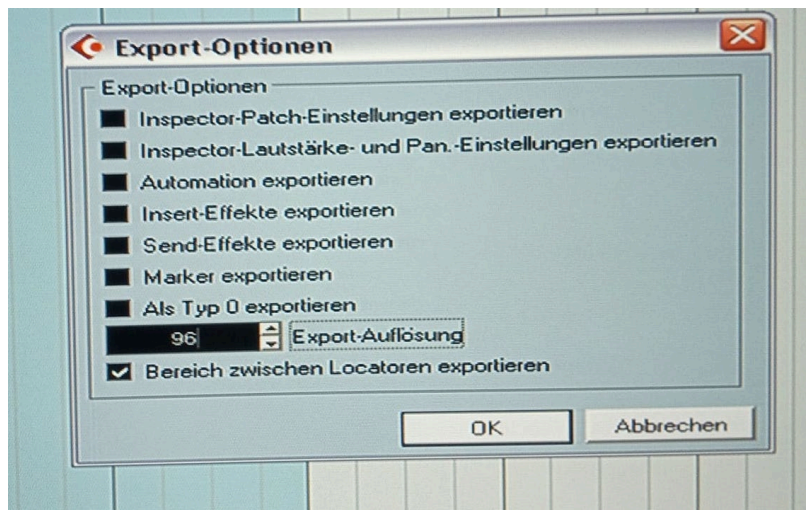


Figure 4. Set 96ppq.

5. Open the Venom Control Panel (your Venom should be connected via USB), select the pattern import tab, browse to your folder and open the MIDI file you've created (Figure 5). My target edit buffer is single, Start measure 1, MIDI Channel 1, Count is 16, Units = 8th notes. The root note can be changed afterwards with Vyzex if needed. Press import and Venom receives the sysex (display should show sys).

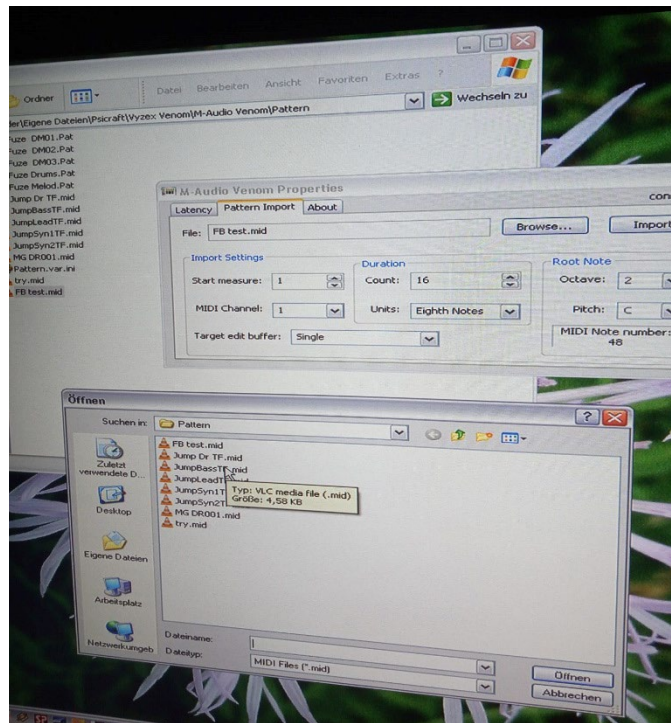


Figure 5. Venom Control Panel Settings.

6. Press Pattern on Venom's front panel and you should see your pattern in Venom's edit buffer, marked with "edited" on the display (Figure 6). (Bank A instead of B as written in the manual!)



Figure 6. Example Venom Display.

7. Play your pattern with a before selected matching sound for the pattern (i.e. drums for a beat, synth for a melody) Changing the sound directly after importing deletes the edit buffer and you will have to import the pattern again. But that's so fast, so no problem at all.
8. You can leave the Venom Control Panel app open the whole time, so you can change settings there if needed and import new.
9. Press store to save the pattern manually in Venom's user bank if it matches your expectations.
10. That's all to import a pattern. You can now change the pattern settings with Vyzex, but if you do so, there is a bug whereby Vyzex sets the octave range automatically to +4. I can avoid this with MIDI designer by changing my Arp/pattern settings there. Maybe it's just Vyzex and Windows, or try to use the first version Vyzex editor because the updated version may have the bug (I think).